

QGD Online

A Publication of the Quilter's Guild of Dallas ❖ www.quiltersguildofdallas.org

Next Meeting
August 1, 2013

Margaret Wolf, VP-Programs and Workshops
margaretwolf5@gmail.com



Ann Peterson

Ann Peterson says that quilting has become her favorite pastime and occupation. She enjoys playing with design, color, and texture in quilting. If she has a recognizable style it would be quilts which are heavily pieced and heavily quilted. You will enjoy her play with color shifts across the surface of her quilts. "I now quilt mostly for shows. Friends and relatives have more quilts than they probably actually want and my house is well padded with quilts of all sizes. By making quilts for show I can test my skills and try to keep improving. I have been fortunate enough to win a few big awards and have my quilts published. The cover of *Quilter's Newsletter Magazine* in March/April of 2007 was a real highlight."

Workshops:

*****Location Change*****

Richardson Civic Center

Located just across the street from the old location!!

411 Arapaho, Suite 102

**Access from Belle Grove and one block south of Arapaho/Central
Richardson, TX 75080**

Tel 972-744-4093 | Fax 972-744-5816

www.cor.net/civiccenter

- **Friday, August 2 – *Beyond the Basics: Free-Motion Quilting***
In this class you will create a stitch sampler. If you just want to practice the stitches without making the stitch sampler, bring a 32" x 38" piece of nearly solid fabric (not white or off-white will be easier to mark), a 34" x 40" piece of backing fabric and a 34" x 40" piece of cotton or cotton blend batting. Ann will provide detailed information about threads, needles and other tools for free-motion quilting. Sewing machine required.



(See Saturday Workshop on page 3)

What to bring to meeting:

- Membership card
- Bring and Brag items
- Guild Library books
- Money to register for upcoming workshops, etc.
- Completed Covers for Kids projects

From the Membership has its privileges! President

Judy Kriehn, Guild President – jkriehn@verizon.net



You've noticed that we've had the membership form included in the newsletter last month and this month. It'll be in September as well. It's time to RENEW YOUR MEMBERSHIP, because the 2013-14 membership year begins on September 1st.

This fact has me thinking about that phrase, "membership has its privileges." In our case, it does! For your \$15-25 (depending on whether you are over or under 65 years of age), you get a lot, including:

- Free attendance at monthly Guild meetings to hear inspiring guest speakers.
- Reduced price attendance at workshops presented by aforementioned speakers.
- Access to this informative online newsletter, *QGD Online*.
- One day free admission to the annual quilt show.
- Up to four quilts entered in the show for no charge.
- Complimentary admission to the annual TAQG Rally Day.
- Book borrowing privileges from our extensive Guild library.

I know that there are some who feel that there are "perks" they should be getting but are not. But in response to that, I'm compelled to remind you that this is a VOLUNTEER organization. Not only does the Board have to consider the financial implications of a request, but we must also weigh the volunteer implications.

For example: We get two or three requests a year to have hard copies of the newsletter mailed out. However, this practice was discontinued several years ago. At the time, the cost was the single biggest factor; printing and mailing the newsletter alone consumed most of the annual membership dues collected. A huge secondary factor was the timeliness of the information included. Because of the lag time that bulk mailing has, articles had to be written TWO MONTHS before the newsletter was to be mailed. So... by the time members read the newsletter, the news was old. And we were unable to address late-breaking information, because the newsletter was already at the printer or in the mail. Bummer. So, there are NO plans to reinstate the mailing of printed newsletters. We believe that for the rare member who does not have a computer or internet access, there is a friend or family member who DOES, and can print out a copy for them to read. If you have a friend who falls into the technology-free category, think of printing a copy for that friend as an easy monthly volunteer task that you can do for your friend and for the Guild.

No Board Meeting in July

The next Board meeting, (and the last Board meeting for 2012-13) will be August 22, 2013 at Shearith Israel.

Sunshine and Shadows

Suzanne Hardebeck
Interior Communications
Chairman

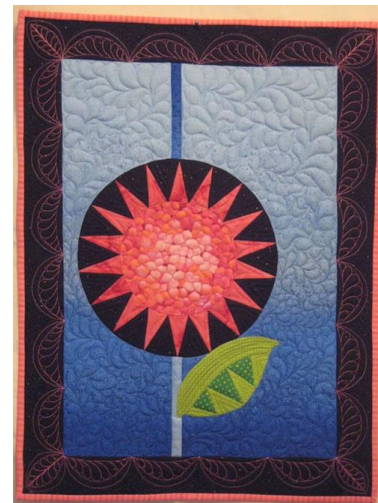
- **Sunshine** – Suzanne Hardebeck will be presenting a Patriotic Trunk Show July 25 at the Sherman Quiltmakers meeting. She will show several eagle quilts and members will enjoy seeing her collection of red, white, and blue quilts.



Saturday Workshop

(continued from page 1)

- **Saturday, August 3, 2013 - Mini Star Flower Workshop - Paper Piecing in the Round.** This is a single star flower and leaf from the *Mini Licorice Star Garden*. You will make a small wall hanging and learn paper piecing in the round and setting circles into a background as well as preparing the leaf for hand or machine appliqué.



For supply lists and further info on the workshops, visit the Guild website at

www.quiltersguildofdallas.org or
<http://www.obsessivequilter.weebly.com/>

September 5 ***Location Change***

Preston Hollow Presbyterian Church

9800 Preston Road, Dallas, Texas 75230

(Corner of Preston Road and Walnut Hill Lane)

Meeting is in Jubilee Hall – Parking is behind the church and the Hall is in the new addition.

*No Library, No Show & Tell at this meeting

Speaker—**Bonnie Hunter**, a self confessed Quiltaholic! Not a day goes by that she is not dreaming, plotting, planning, cutting, stitching (and un-stitching!) on SOMETHING Quilt-Related!

Friday Workshop, Sept. 6—Jamestown Landing (class is full) –What a great way to clear out scraps by choosing two color families: A foreground (Blue) and a background (Neutral). Students will learn the basics of string piecing along with learning to use the Easy Angle ruler to create half square triangle units from 2 1/2" scrap strips. **Location change** – check guild website – workshop location TBD

Saturday Workshop, Sept 7—Virginia Bound (class is full) – Based on the traditional Rocky Road to Kansas block, she has revamped it for foundation piecing! **Location change** – check guild website – workshop location TBD

Visit Bonnie's website at <http://www.quiltville.com/>

**Ed. Note – contact Margaret Wolf for info on waiting list/location for workshops --
margaretwolf5@gmail.com

October 3

Speaker—**Kimberly Einmo**, author, international quilting instructor and quilt judge. She has written three books: *Quilt A Travel Souvenir*; the #1 best-selling book published by the American Quilter's Society in 2010, *Jelly Roll Quilts and More*; and her third book, *Jelly Roll Quilt Magic*. She has also developed a signature line of innovative tools. Her articles have been published in numerous national magazines.

(See Programs, continued on page 4)

Programs

(Continued from page 3)

Friday Workshop, Oct.4—Rainbow Geese Crossing -- Have you seen those delectable rolls or precut packages of rainbow-colored strips but you weren't quite sure what to do with them? Rainbow Geese Crossing is the perfect pattern to feature those luscious fabrics!

Workshop location TBD.

Saturday Workshop, Oct. 5—Lone Starburst Magic -- Learn to strip-piece and cut diamond building blocks from pre-cut strips using the EZ Jelly Roll Ruler using no “Y” or set-in seams. You'll design your very own, completely unique Lone Star variation quilt.

Workshop location TBD.

<http://www.kimberlyeinmo.com/>

November 7

Speaker—**Jeananne Wright**

No Workshops this month

December 5

Speaker—**Donna Hall**

Holiday Show & Tell

From your collection, please show us your winter quilt, your red and green quilt, your Hanukah quilt, just a red quilt, or a holiday quilt.

No Workshops this month.

***Visit the guild website at www.quiltersguildofdallas.org for complete list of programs and workshops

Red Snails in the Sunset

2014

Raffle Quilt

Designed and made by
Kelly Edwards and Sharry Evans
Quilted by Richard Larson



“The Original Sewing & Quilting Expo”

Marie Zaczkowski
6th VP – Show Chair

A Fun Volunteer Opportunity

The Original Sewing & Quilting Expo is coming to the Amon Carter Jr. Exhibits Building at the Will Rogers Memorial Center in Fort Worth, October 17, 18 and 19, 2013. The Expo is three days of fun, including classes, workshops, great shopping with retailers from across the country, fashion and trunk shows, how-to demonstrations, and more.

Ambassadors are needed for:

- Classroom assistant
- Greeter
- Ticket Scanner
- Lobby Host
- Info Desk Assistant
- Display Set-up/Tear Down
- Sewing Studio Organizer
- White Glove Gallery Host
- Sewing Machine Check Assistant
- Vendor Booth Help

The Expo is offering the Quilter's Guild of Dallas a free booth to promote our guild. We will sell tickets for our raffle quilt, sign up new members, promote our workshops and our quilt show. To get the booth for free, we need your help by volunteering to serve as an ambassador for the show by working a half-day shift. To sign up, use this link:

<http://www.sewingexpo.com/AmbassadorApp.aspx>

Your past experience as a Dallas Quilt celebration volunteer is a plus. When you volunteer, be sure to indicate that you are a Quilter's Guild of Dallas member. After you have completed your shift as an Ambassador, you will have time to see the show for free and cover a shift in the Quilter's Guild of Dallas booth.

For more information on the Expo go to www.sewingexpo.com/FortWorthTX.aspx Questions?? Contact Marie Zaczkowski at marie.zaczkowski@verizon.net or 972/495-7596

Quilt Celebration 2014 Show Committee

Marie Zaczkowski,
6th VP – Show

The show committee for Quilt Celebration 2014 is almost complete, but we are still looking for two volunteers to coordinate the **On-Site Admissions** area. This is the area at the front of the show where we sell on-site tickets and get our guests into the show as quickly as possible. We always have a great group of volunteers selling the tickets, but we need two people to organize and manage the area. You will need to be at the show all three days, but the busiest time is the morning and you will still have time to see the show in the afternoons when ticket sales slow.

If **Admissions** sounds like the job for you (and a quilt guild member friend) or you need more information about the position, call Marie Zaczkowski (214/957-7190) or email marie.zaczkowski@verizon.net.

Covers for Kids

Pam Hanson
1st VP – Community Service

Can you believe 2013 is more than half over? In October, we will be passing our our annual "Volunteer Service" pins to members who have contributed at least 10 hours of volunteer service time to the Guild. Attending a Covers for Kids workshop is an easy way to earn a few hours working on some easy sewing projects. Our next workshop is Saturday, July 20th, at Hancock's near Firewheel. Let Rhonda Anderson know if you can sew all day, half a day, or just for a few hours. Space is limited, so please email Rhonda if you can attend -- abusyquilter@tx.rr.com.

Nancy Drew Challenge Quilts need to be finished and turned in to Rhonda Anderson by the Guild's August Board meeting on the 4th Thursday (Aug. 22). Good luck!

If you like to machine quilt, Covers For Kids could use your help because we always have loads of tops ready for quilting. We supply the top, backing, and batting, and... we have no time limit! Let Rhonda know if you can help.

Quilt Shows and Events Calendar*

Donna Petrick,
TAQG Representative

*For additional information on these or other events, visit the website at:
www.quiltersguildofdallas.org

July 19 & 20

Ellis County Quilt Show

Where:

Conference Center
Midlothian, TX

Information:

www.elliscountyquilters.com

July 26 & 27

Bonham Quilt Hop

Hours:

Friday, July 26: 1 – 4:30 pm
Saturday, July 27: 9 am – 4 pm

Information:

Quilt displays, vendors, demonstrations, and games.
Appraisals by appointment
Fannin County Barn Quilt Trail – Largest trail in Texas
www.visitbonham.com

August 9 & 10

Quilt Plano 2013

Where:

Plano Centre
2000 Spring Creek Pkwy.

Hours:

9 – 5 pm Friday and Saturday

Information:

For link to mini-quilt auction
http://quiltersguildofplano.org/gallery/main.php?g2_itemId=5046

August 24

Lone Star Quilt Study Group

Where:

Texas Tech University
Lubbock, TX

Information:

Program on quilts in the University collection presented by Mei Campbell, Curator and guild member Marian Ann Montgomery, Ph.D. These quilts are seldom on exhibition. See article p. 11, or visit www.lonestarquiltstudygroup.org
(See Events on page 7)

Events **September 4-October 14**

(Continued from page 6)

Making Alzheimer's a Distant Memory: The Mind's Eye

Where:

Watson Art Gallery, Lovers Lane United Methodist Church

Information:

DAFA Show Chair show@dallasfiberartists.org

(For more information see *DAFA Show to Benefit Alzheimers Assn.* article on p. 8)

September 20 & 21

Christmas Memories Quilt Show

Where:

First Baptist Church Recreation Outreach Center
115 Putnam St. (between Oak Ave. and Gilmer)
Sulphur Springs, TX 75482

Information:

14th annual show -- sponsored by Lone Star Heritage Quilt Guild
of Sulphur Springs

www.sulphurspringstxquilts.com

September 27 & 28

Quilting: Art for Today

Where:

Dell Diamond
3400 Palm Valley Blvd.
Round Rock, TX 78664

Information:

Sponsored by Chisolm Trail Quilt Guild

<http://www.ctquiltguild.org/show.php>

October 4 & 5

Heritage on the Brazos

Where:

Somervell County Expo
202 Bo Gibbs Blvd., Hwy. 67
Glen Rose, TX

Hours:

Friday 10 am – 6 pm
Saturday 10 am – 5 pm

Information:

http://granburyquiltguild.com/?page_id=60

(See Events on page 10)

Dallas Area Fiber Artist (DAFA) News

Lu Peters,
Special Correspondent

Visitors are welcome at DAFA meetings!

We have a mini workshop at 5:30 prior to most meetings and there is usually a small kit fee (never exceeds \$5) to cover supplies. There is no charge to attend the meetings which start at 6:45. DAFA meets the 4th Monday of each month at The Point, Center for Arts and Education on the campus of C.C. Young Retirement Community, 4829 Lawther West, in Dallas.

For more information, visit the DAFA website at <http://www.dallasfiberartists.org>



Monday, July 22, 5:30 – 9:00pm

Artist presentation: DFW watercolorist and collage artist Dianne Hicks presents *Stamping and Collaging with Patterns*. She will explain how she creates her hand-carved rubber stamps and how she collages her beautifully patterned works.

Mini-workshop: Dianne will lead us in "Collaging Recognizable Shapes." The kit will include some of her beautiful patterned papers.

Monday, August 26, 5:30 -- 9:00 pm

Artist presentation: Art quilter and DAFA member Sara Miller-Moe presents *From Stitches to Strokes*, a trunk show of her striking curve-pieced quilts. Sara's work ranges from quilting to painted art that incorporates fabrics and threads. She'll talk about her recent success with mixed-media painting and collaging.

Mini-workshop @ 5:30: Louise Schubert will lead participants in making "Art Doll Pins." Louise is currently president of the DFW Chapter of the American Sewing Guild.



DAFA Show to Benefit Alzheimers Assn.

DAFA has joined with members of the Lovers Lane United Methodist Church and the Dallas Chapter of the Alzheimer's Association to commemorate World Alzheimer's Month with an exhibit of fiber art.



Shattered Curves
by Jules Rushing

Making Alzheimer's a Distant Memory: The Mind's Eye will showcase fine fiber art that explores the impact of Alzheimer's Disease and will raise funds for Alzheimer's research. You are invited to submit work for jurying into this show. All work will be for sale and a portion of each sale will be donated to the Alzheimer's Association.

Exhibit dates are September 4-October 14 at Watson Art Gallery, Lovers Lane United Methodist Church, 9200 Inwood at Northwest Hwy., Dallas.

show@dallasfiberartists.org

It's Renewal Time!

Be sure to use the **CURRENT** membership form from the newsletter. Val Hubbard has "retired" from her post as "keeper of the membership database," so you'll need to be sure to send your form and payment to our **NEW** database manager,

Kerri Green, 3981 Cobblestone Circle, Dallas, TX 75229.

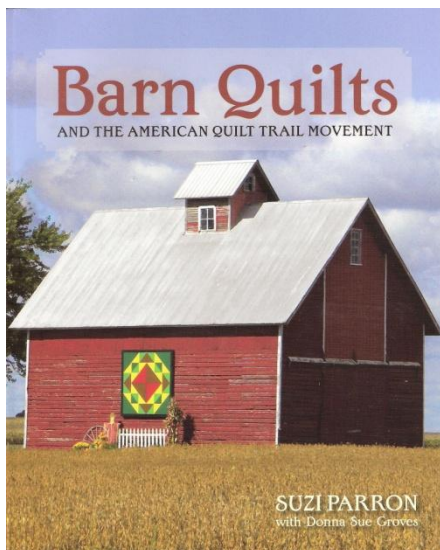
(Thank you for volunteering, Kerri!)

If you bring your renewal form to either the August or the September meetings, you'll have the option of paying via credit card.

The renewal form is included on page 12 of this newsletter.

Summer Travel: Time to see Barn Quilts

Marian Ann J. Montgomery, Ph.D.
7th VP – Education



Recently Muriel Dreyfus, a Charter Member of the Guild, reminded me of the barn quilts that have sprung up across the countryside. Barn Quilts are quilt blocks which have been painted on the side of a barn. They are painted in color and are usually about 8 x 8 feet in size. Begun in Ohio as part of a celebration of rural life, many other states have taken up the project because it is a great boost to tourism. You will find quilt blocks painted on the sides of barns across the country. I had heard about these barn quilts and found some to my delight on a drive through some rural area, but sorry—I cannot remember what state I was in. Still it was great fun to see the quilts and to look for more—sort of like an Easter Egg hunt of quilt blocks.

A wonderful book, *Barn Quilts and the American Quilt Trail Movement* by Suzi Parron with Donna Sue Groves, tells the story behind these wonderful barn paintings. Not only is this a great read, but it might be a nice book to take along on a road trip. The color photographs of the quilt blocks are beautiful and the stories behind Suzi's discovery of the quilt blocks are interesting. Donna Sue Groves was the woman in Ohio who came up with the idea of Barn Quilts, somewhat from her childhood joy at seeing the hex signs on Pennsylvania barns during family vacations.

Suzi writes that Teva from Kentucky said, “the idea of putting quilt squares on barns was to celebrate the art of rural America. Everyone thinks of agriculture and the men hard at work; we wanted to recognize the women’s role and remind folks that we have always produced art as well.”

A little closer to home is the *Largest Quilt Barn Trail in Texas*, in the Bonham, Texas area. The Fannin County Quilt Barn Trail listing of block names and addresses can be downloaded at:

http://www.visitbonham.com/files/Quilt_Trail_03_20132.pdf .

There are some terrific quilt shops in Fannin County so you might like to combine your trip with a shop hop or attend their quilt show. We often look for “free” adventures in our household and I’m trying to persuade my husband that driving the Quilt Barn Trail would be great fun. Haven’t quite succeeded, yet, but I’m still trying. *Ed. Note: See July Bonham Quilt Hop listing in our Events Calendar on page 6.*

Suzi had a booth at the Houston International Quilt Festival, where I found the book, and I’m not sure how available it is other than through her. If you are looking for it, it was published by Swallow Press/ Ohio University Press, Athens, Ohio 45701 in 2012. Their website is www.ohioswallow.com. Further information on barn quilts can be found at www.barnquiltinfo.com and you can e-mail author Suzi Parron at suzi@barnquiltinfo.com.

Happy hunting!

Events **October 5**

(Continued from page 7)

A Homecoming of Quilts 2013 – Auction

Where:

The Grand Palace
314A Pruitt Road
Spring, TX
<http://thegrand-palace.com/>

Hours:

Preview 6 pm
Auction 7 pm

Information:

Live and silent auctions will feature new quilts and quilted items of all sizes, a rare grouping of antique quilts and donations from local merchants.

Admission \$5—includes 2 drinks at wine, cheese, dessert bar and chance at door prizes. Portion of proceeds goes to The Rose, a non-profit Quality Breast Health Care Org. <http://thegrand-palace.com/>

October 5

The Roads We Have Traveled

Where:

The Grand Texas Hotel and Convention Center
4300 W. Wall St.
Midland, TX

Hours:

9am – 5 pm

Information:

Featured Quilter – Joan Bechtel, architect, and award winning quilter. Quilters' Market, vendors, silent auction, appraisals, raffle quilt.

<http://midlandquiltersguild.com/>

October 18 &19

Texas Star Quilters Guild Annual Quilt Show

Where:

Canton Civic Center
Flea Market Road
Canton, TX

Information:

(903) 567-4511

It's Time to Update the Resource List!

*Suzanne Hardebeck
Internal Communications Chair*

Did you know that each year the Quilter's Guild of Dallas publishes a **Resource List**? It is a list of Guild members who provide quilt-related services to other Guild members and the public. Take a look!

http://quiltersguildofdallas.org/Guild_Activities/2012-13_resource_list_final.pdf

The list serves as a reference for anyone needing to hire someone for a given service. For example: a co-worker has mentioned wanting to have a t-shirt quilt made for a family member. A friend has acquired a quilt top made by a family member that they would like to have finished as a quilt. Perhaps you yourself are in need of someone to do some repairs/restoration on an old quilt you own. This list can help find the right person to accomplish the objective.

Some of the categories included in the list are:

- Custom Quilt Making
- Longarm Quilting
- Appraisals
- Quilt Conservation
- Teaching
- Website Design
- Lectures
- Graphic Design
- Judging

There is no charge to be included, but you **MUST** be a member in "good standing" - that is, your membership/information has been paid/updated for 2013-14. If you are currently on the list, you simply need to confirm that with the editor (Suzanne Hardebeck) on or before September 30, 2013, and, if appropriate, include any changes needed for your listing. Listings that are not confirmed prior to September 30th will be deleted.

If you would like to have your business added to the list, please send the appropriate information to the editor for inclusion. After September 30th, the names submitted will be double-checked against the membership list, and then the Resource List will be published on the Guild website.

Send your confirmations, updates, inclusion requests, etc to: Suzanne Hardebeck
sshardebeck@aol.com

Texas Tech Quilt Collection on View for Lone Star Quilt Study Group

*Marian Ann Montgomery Ph.D.
7th VP – Education*

For the first time in a long time the Texas Tech Quilt Collection will be open for view when the Lone Star Study Group meets in Lubbock on Saturday, August 24, 2013. This is a wonderful opportunity to see the quilts there, which are seldom on exhibition. Mei Campbell, Curator of Ethnology, Textiles and Fashion and our Guild member, quilt historian, Marian Ann Montgomery, Ph.D., will present a program on the quilts. Professor Campbell anticipates retiring and this may be the last time for a long time that these quilts will be available for view.

Attendees will have the opportunity to see the quilts up close and there will be a Show and Tell of antique quilts from the Southwest. Also on exhibit that day will be the exhibit "Little Black Dress," and attendees will be able to see that exhibit as well as others at the Texas Tech University Museum for free. For additional information and to download the registration form please visit www.lonestarquiltstudygroup.org

2013-2014 Quilter's Guild of Dallas Membership Form

PLEASE PRINT CLEARLY. Your name should appear as you wish to have it listed in the Guild Directory.

Date Form Completed		Membership #
Name		
Mailing Address		
City	State	ZIP+4
Home Phone	Work Phone	Cell Phone
E-Mail Address: (Notification will be sent via e-mail when the latest newsletter has been posted on the Guild website.)		

We publish the NAMES of all Guild members with dues paid as of the September Guild meeting in the annual *Guild Membership Directory*. However, we will withhold CONTACT INFORMATION on request.

Please check here if you **DO NOT** want your contact info to appear in the directory.

<p>Be a Volunteer! We'd love to have you share your interests and/or skills. Please indicate interests and/or skills you have to share:</p> <p><input type="checkbox"/> Database</p> <p><input type="checkbox"/> Event planning</p> <p><input type="checkbox"/> Financial management</p> <p><input type="checkbox"/> Graphic design</p> <p><input type="checkbox"/> Greeting people</p> <p><input type="checkbox"/> Library</p> <p><input type="checkbox"/> Photography</p> <p><input type="checkbox"/> Program assistance (helping display quilts, sales table, etc.)</p> <p><input type="checkbox"/> Publicity/PR</p> <p><input type="checkbox"/> Quilt show</p> <p><input type="checkbox"/> Recruiting</p> <p><input type="checkbox"/> Retreat planning</p> <p><input type="checkbox"/> Sales/marketing</p> <p><input type="checkbox"/> Sewing for charity</p> <p><input type="checkbox"/> Taking guest speakers to dinner</p> <p><input type="checkbox"/> Teaching/educating others about quilts</p> <p><input type="checkbox"/> Transporting guest speakers; workshop, airport, etc.</p> <p><input type="checkbox"/> Writing</p> <p><input type="checkbox"/> Other</p> <p>_____</p> <p>_____</p> <p>_____</p>	<p>Please Indicate Age Group:</p> <p><input type="checkbox"/> 17 & Under <input type="checkbox"/> 40-49</p> <p><input type="checkbox"/> 18-29 <input type="checkbox"/> 50-64</p> <p><input type="checkbox"/> 30-39 <input type="checkbox"/> 65+</p>	<p>Check One:</p> <p><input type="checkbox"/> New Member</p> <p><input type="checkbox"/> Renewal/Rejoin*</p> <p><input type="checkbox"/> Life Member</p>	<p>Renewals & Rejoins:</p> <p><input type="checkbox"/> Check here if any of the above information has changed from the previous year(s).</p>												
	<p>DUES INFORMATION: In accordance with Guild bylaws, the membership year runs from September 1 through August 31. DUES ARE TO BE PAID ON OR BEFORE THE SEPTEMBER MEETING DATE. Returning/renewing members submitting dues after that date will be assessed a \$5.00 late fee.</p> <p><i>* Renewing - member during 2012-13; Rejoining - previously a member, but not during 2012-13.</i></p>														
<p>Non-refundable dues are as follows:</p>															
<p>New Member</p> <table border="1"> <tr> <td>Joining between September 1, 2013 and March 9, 2014</td> <td>+ \$25.00</td> <td>\$ 25.00</td> </tr> <tr> <td>Joining between March 10 and August 31, 2014</td> <td>(- \$ 5.00)</td> <td>\$</td> </tr> <tr> <td>OPTIONAL Senior discount (must be aged 65+ to choose this option)</td> <td>(-10.00)</td> <td>\$</td> </tr> <tr> <td colspan="2" style="text-align: right;">New Membership Dues Total</td> <td>\$</td> </tr> </table>				Joining between September 1, 2013 and March 9, 2014	+ \$25.00	\$ 25.00	Joining between March 10 and August 31, 2014	(- \$ 5.00)	\$	OPTIONAL Senior discount (must be aged 65+ to choose this option)	(-10.00)	\$	New Membership Dues Total		\$
Joining between September 1, 2013 and March 9, 2014	+ \$25.00	\$ 25.00													
Joining between March 10 and August 31, 2014	(- \$ 5.00)	\$													
OPTIONAL Senior discount (must be aged 65+ to choose this option)	(-10.00)	\$													
New Membership Dues Total		\$													
<p>Renewing/Rejoining Member</p> <table border="1"> <tr> <td>Dues Paid on or before September meeting date</td> <td>\$ 25.00</td> <td>\$ 25.00</td> </tr> <tr> <td>OPTIONAL Senior discount (must be aged 65+ to choose this option)</td> <td>(-\$ 10.00)</td> <td>\$</td> </tr> <tr> <td>Late Fee (assessed after September Guild meeting date)</td> <td>+ \$ 5.00</td> <td>\$</td> </tr> <tr> <td colspan="2" style="text-align: right;">Renewal / Rejoining Membership Dues Total</td> <td>\$</td> </tr> </table>				Dues Paid on or before September meeting date	\$ 25.00	\$ 25.00	OPTIONAL Senior discount (must be aged 65+ to choose this option)	(-\$ 10.00)	\$	Late Fee (assessed after September Guild meeting date)	+ \$ 5.00	\$	Renewal / Rejoining Membership Dues Total		\$
Dues Paid on or before September meeting date	\$ 25.00	\$ 25.00													
OPTIONAL Senior discount (must be aged 65+ to choose this option)	(-\$ 10.00)	\$													
Late Fee (assessed after September Guild meeting date)	+ \$ 5.00	\$													
Renewal / Rejoining Membership Dues Total		\$													
<p>Life Member * (Available only to Past Presidents, Charter Members or by recommendation of Executive Committee)</p> <table border="1"> <tr> <td>No Charge</td> <td>- 0 -</td> <td>- 0 -</td> </tr> <tr> <td colspan="3" style="text-align: center;"><i>* Life members MUST submit a completed membership form annually in order to access the benefits of active Guild membership.</i></td> </tr> <tr> <td colspan="2" style="text-align: right;">TOTAL AMOUNT ENCLOSED</td> <td>\$</td> </tr> </table>				No Charge	- 0 -	- 0 -	<i>* Life members MUST submit a completed membership form annually in order to access the benefits of active Guild membership.</i>			TOTAL AMOUNT ENCLOSED		\$			
No Charge	- 0 -	- 0 -													
<i>* Life members MUST submit a completed membership form annually in order to access the benefits of active Guild membership.</i>															
TOTAL AMOUNT ENCLOSED		\$													
<p>Make Checks Payable (in US Dollars) to the Quilter's Guild of Dallas, Inc. DO NOT SEND CASH THROUGH THE US MAIL</p> <p style="text-align: right;">Return completed form and check to: Kerri Green 7018 Arboreal Dr Dallas, TX 75231-7316</p>															
Membership Packet given/mailed <input type="checkbox"/>	Check # _____	Cash paid: _____													